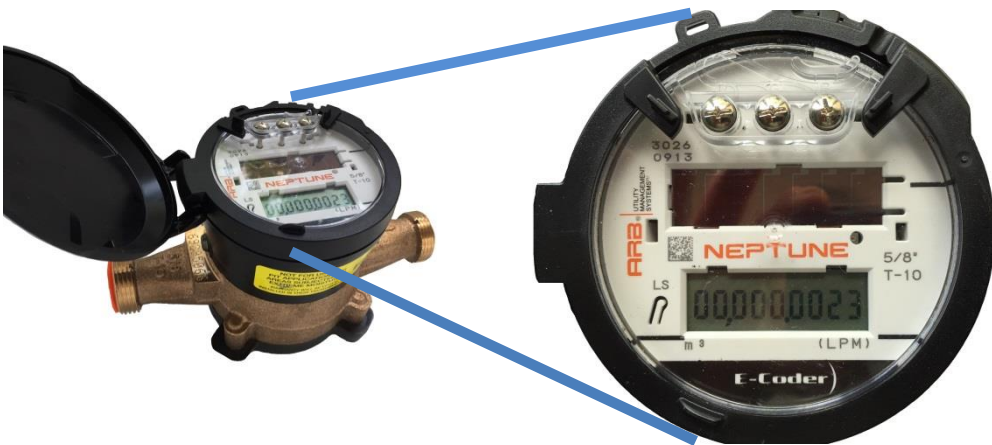


HOW TO READ YOUR ECODER WATER METER

The Municipality will read your water meter at regular intervals for billing purposes. **Should you wish to monitor your own consumption**, here are the steps:



1. Shine a flashlight over the solar panel above the display to activate the LCD screen*
2. Take a reading at a set time of day
3. Take a second reading at the same time the following day
4. Subtract the first reading from the second reading to obtain your daily water consumption

***Note:** when the register display is first activated via flashlight, all digits and icons will be briefly displayed followed by software version information. The register display will toggle displaying the reading (m³) and then the flow rate (li/m). To activate the display the homeowner is required to shine a flashlight above the register solar panel for as long as the homeowner would like the display to be on. Removal of the light will turn the display off and a flash of light will be required again to re-activate the display.

Leak Indicator

Displays a possible leak

- **OFF** – indicates no leak
- **Flashing** – water usage more than 50% of the time in last 24hr period
- **ON (Solid)** – water usage continuous in the last 24 period, most likely a leak in your home



The LCD displays your reading in cubic metres. The last 4 digits to the right of the decimal are fractions of a cubic metre (litres). The City bills consumption in whole cubic metres. An increment of 1 in the last digit to the right represents 1/10th of a litre (100mL) change. This small amount of flow indication can also be used to help confirm leaks.

Flow Indicator

Displays water flow activity

- **ON** – water in use
- **OFF** – water not in use
- **Flashing** – very low flow
- **Negative** – reverse flow
- **Positive** – forward flow